

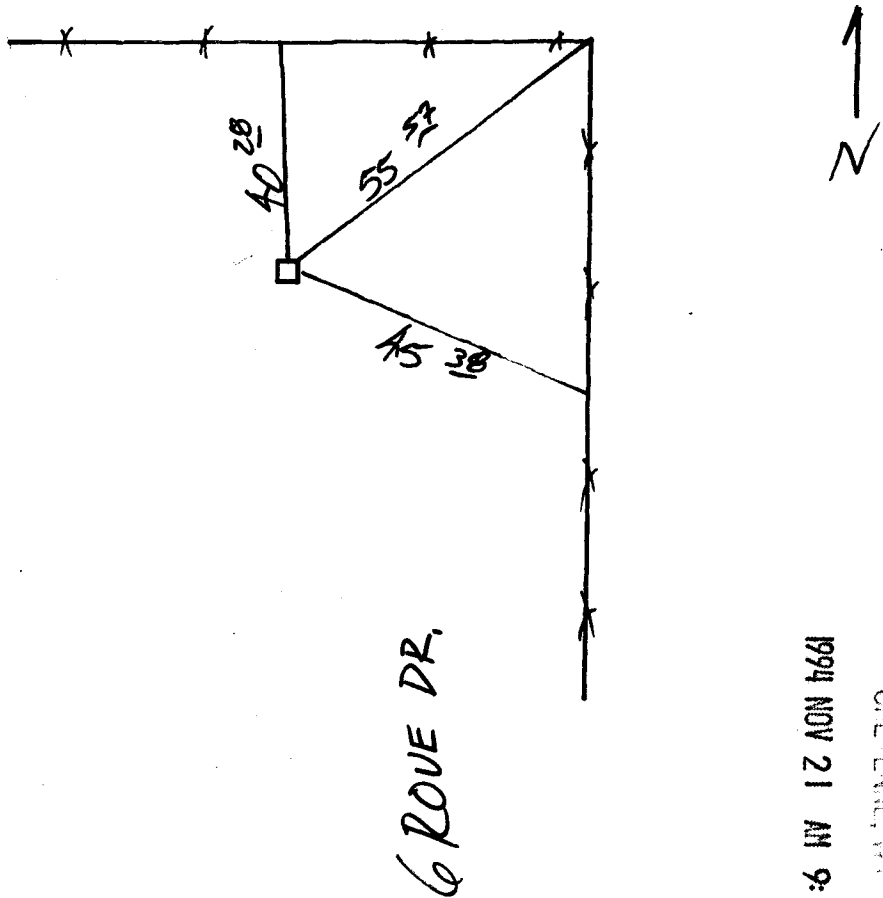
# State of Wyoming Corner Record

(in compliance with the CORNER PERPETUATION AND FILING ACT, Wyoming Statutes, 1977, Section 36-11-101, et. seq., and the Rules and Regulations of the Board of Registration for Professional Engineers and Professional Land Surveyors)

Reverse side of this form may be used if more space is needed.

Record of original survey and citation of source of historical information (if corner is lost or obliterated). Description of corner monumentation evidence found and/or monument and accessories established to perpetuate the location of this corner. Sketch of relative location of monument, accessories, and reference points with course and distance to adjacent corner(s) (if determined in this survey). Method and rationale for reestablishment of lost or obliterated corner.

*Fl well set + marked stone:*



*Set PK + Washers  
In Fence Posts*

154096  
RECEIVING  
LARAMIE COUNTY CLERK  
CHEYENNE, WY  
1994 NOV 21 AM 9:04

Date of Field Work: 9/94 Office Reference: PA/68

**CROSS INDEX DIAGRAM**

Firm/Agency, Address

STEIL SURVEYING SERVICES

This corner record was prepared by me or under my direction and supervision.

1102 WEST 19th STREET

SEAL & SIGNATURE

CHEYENNE WY 82001

Telephone Number: (307) 634-7273

A	2	3	4	5	6	7	8	9	10	11	12	13	14	15	16	17	18	19	20	21	22	23	24	25
B																								
C	6		5		4		3		2															
D																								
E																								
F																								
G	7		8		9		10		11		12													
H																								
I																								
J																								
K																								
L	13		17		16		15		14		13													
M																								
N																								
O																								
P	19		20		21		22		23		24													
Q																								
R																								
S																								
T	30		29		28		27		26		25													
U																								
V																								
W																								
X	31		32		33		34		35		36													
Y																								
Z																								



**BOOK 1388**

Corner Name: Section Section: 28/27 15/66 P.M. Cross-Index No.: V-13  
SBRPEPLS/PLSW: March 1994